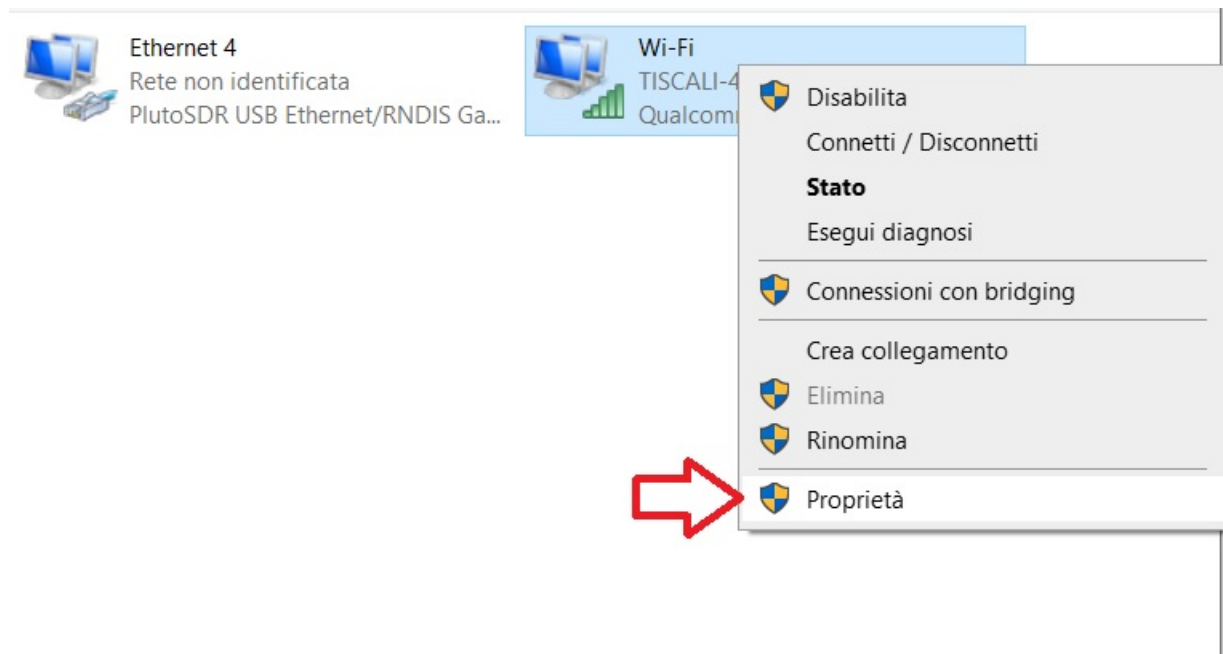


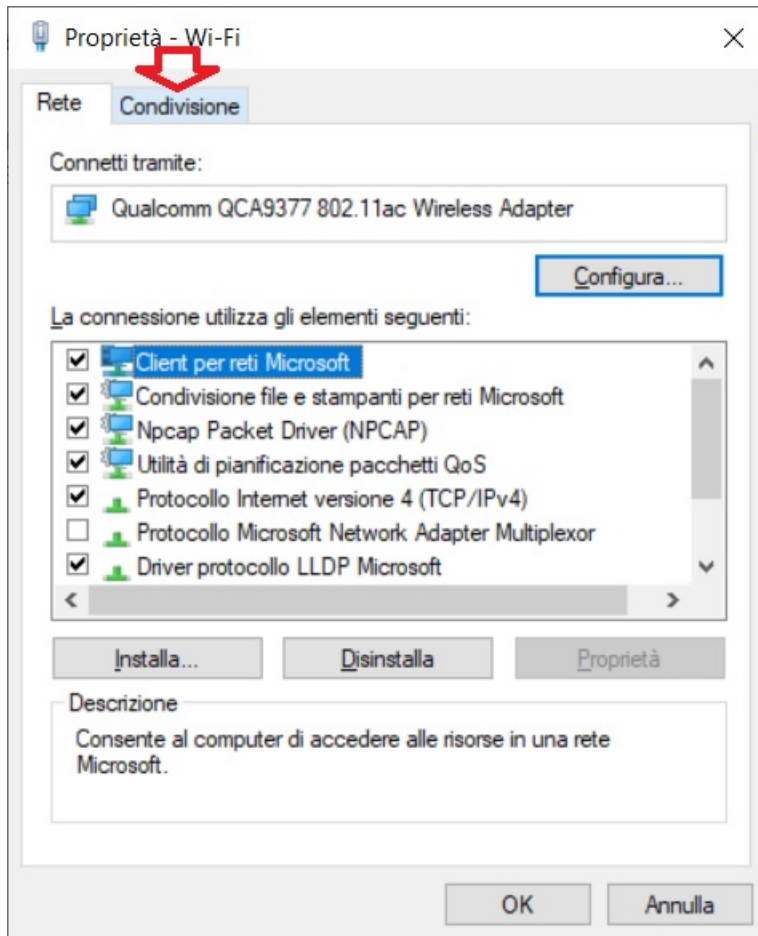
Come connettere Adalm Pluto ad Internet senza l'ausilio dell'adattatore USB/Ethernet

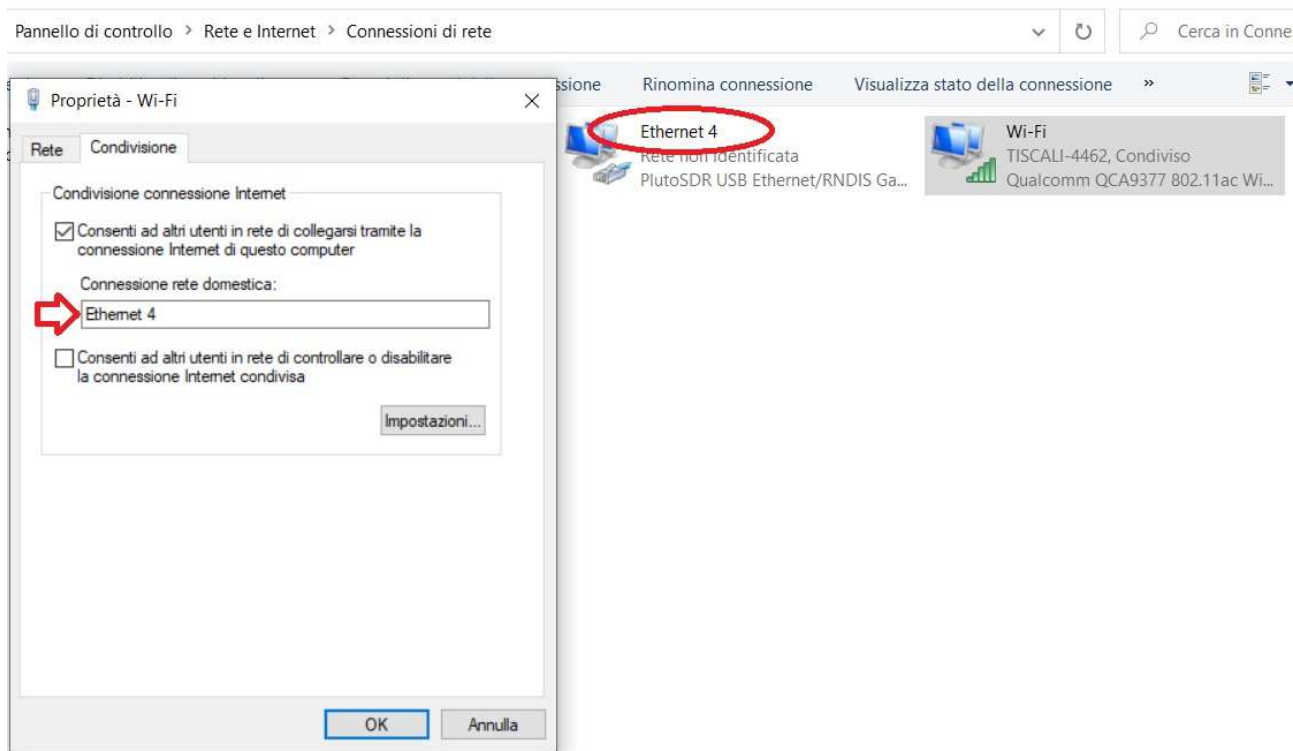
di Roberto ISOGRB

- 1- Accedere al Pluto in SSH sul suo indirizzo IP 192.168.2.1 con **(root/analog)**
- 2- Inserire la rotta statica per la rete Internet sul Pluto:
route add default gw 192.168.2.10 usb0
- 3- Sul proprio PC , selezionare la voce proprietà sulla rete Ethernet cablata o Wi-Fi (quella attualmente connessa ad Internet):

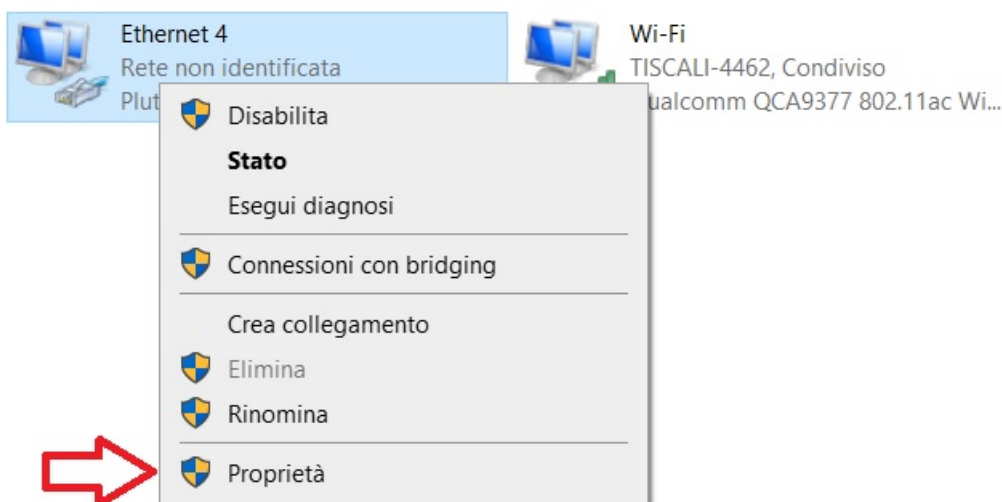


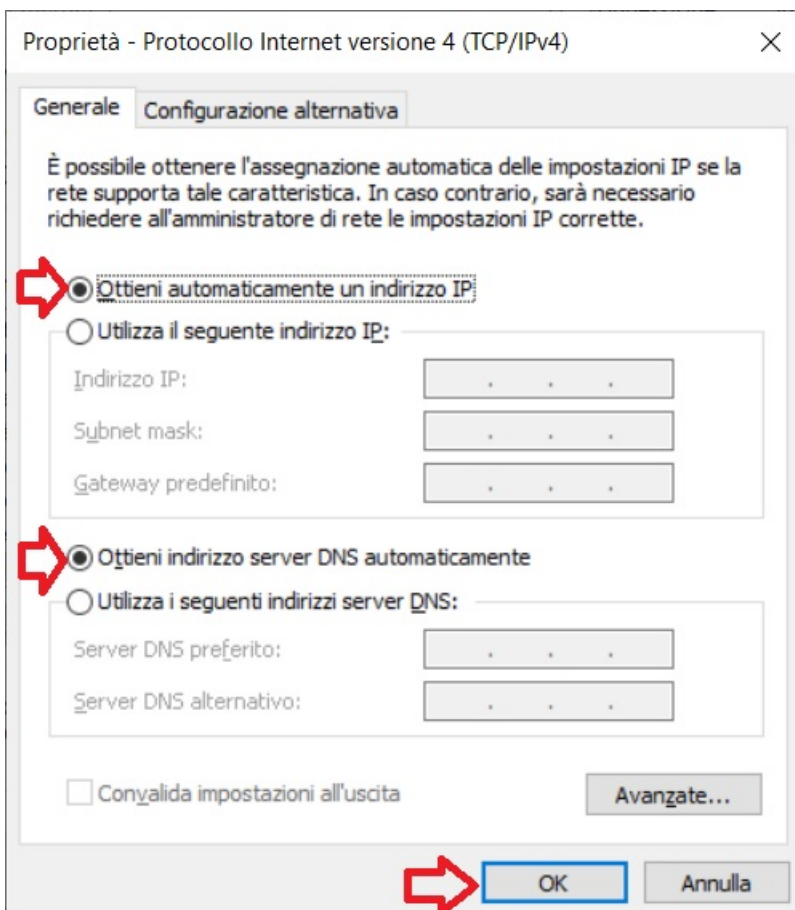
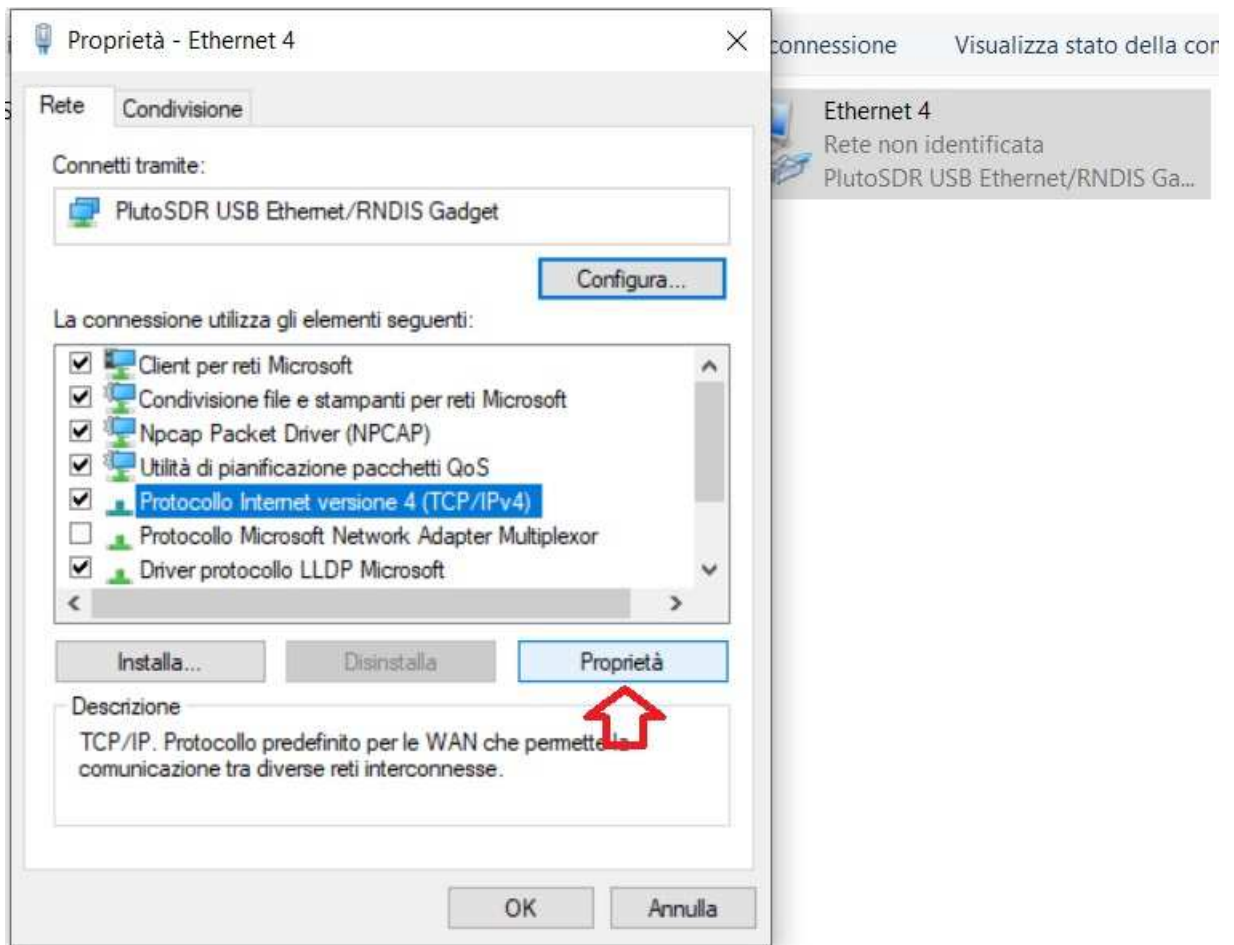
Dal menu **Condivisione**, attivare “*Consenti ad altri utenti in rete...*”, selezionare poi la rete del Pluto, nel mio caso **Ethernet4** e confermare con **OK**:





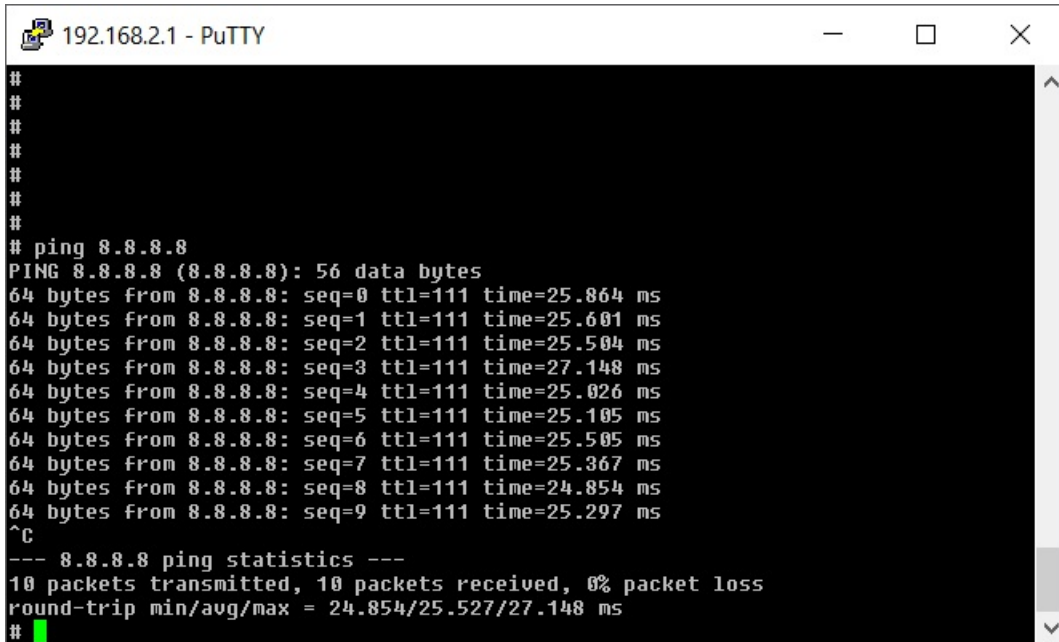
Accedere ora alle proprietà della rete del Pluto, nel mio caso **Ethernet4** e **selezionare Indirizzo IP e DNS automatici**, in quanto dopo che viene attivata la condivisione Internet Windows imposta per la rete del Pluto l'indirizzo IP errato 192.168.137.1, differente da quello che dovrebbe avere 192.168.2.10:





Facciamo ora il test di raggiungimento Internet dal pluto:

```
# ping 8.8.8.8
```

A screenshot of a PuTTY terminal window titled "192.168.2.1 - PuTTY". The terminal shows a series of hash symbols (#) followed by the command "# ping 8.8.8.8". The output displays the results of a ping test to 8.8.8.8, showing 10 packets transmitted and received with 0% packet loss. The round-trip times are listed as min/avg/max = 24.854/25.527/27.148 ms. The terminal ends with a green cursor and a hash symbol (#).

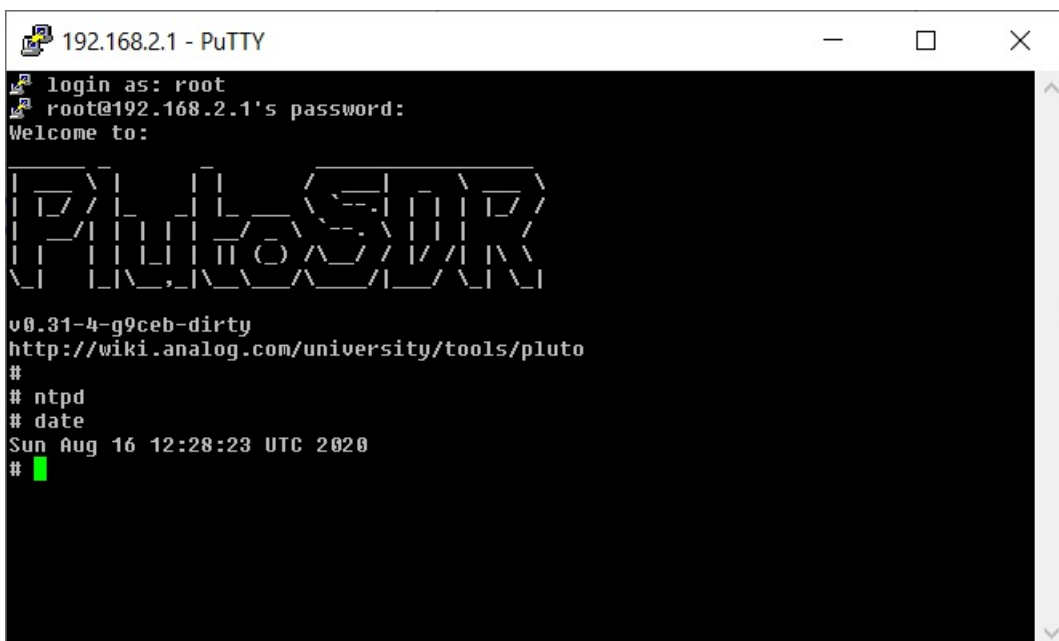
```
#  
#  
#  
#  
#  
#  
# ping 8.8.8.8  
PING 8.8.8.8 (8.8.8.8): 56 data bytes  
64 bytes from 8.8.8.8: seq=0 ttl=111 time=25.864 ms  
64 bytes from 8.8.8.8: seq=1 ttl=111 time=25.601 ms  
64 bytes from 8.8.8.8: seq=2 ttl=111 time=25.504 ms  
64 bytes from 8.8.8.8: seq=3 ttl=111 time=27.148 ms  
64 bytes from 8.8.8.8: seq=4 ttl=111 time=25.026 ms  
64 bytes from 8.8.8.8: seq=5 ttl=111 time=25.105 ms  
64 bytes from 8.8.8.8: seq=6 ttl=111 time=25.505 ms  
64 bytes from 8.8.8.8: seq=7 ttl=111 time=25.367 ms  
64 bytes from 8.8.8.8: seq=8 ttl=111 time=24.854 ms  
64 bytes from 8.8.8.8: seq=9 ttl=111 time=25.297 ms  
^C  
--- 8.8.8.8 ping statistics ---  
10 packets transmitted, 10 packets received, 0% packet loss  
round-trip min/avg/max = 24.854/25.527/27.148 ms  
#
```

Attivando *ntpd* potrete aggiornare data e ora del Pluto

```
# ntpd
```

Con il comando *date* potrete vedere data e ora corretti

```
# date
```

A screenshot of a PuTTY terminal window titled "192.168.2.1 - PuTTY". The terminal shows a login prompt for root, followed by the system's banner which includes the name "PLUTO" in large ASCII art letters. Below the banner, the system version "v0.31-4-g9ceb-dirty" and a URL "http://wiki.analog.com/university/tools/pluto" are displayed. The user then enters the commands "# ntpd" and "# date", and the terminal shows the current date and time: "Sun Aug 16 12:28:23 UTC 2020". The terminal ends with a green cursor and a hash symbol (#).

```
login as: root  
root@192.168.2.1's password:  
Welcome to:  
  
PLUTO  
  
v0.31-4-g9ceb-dirty  
http://wiki.analog.com/university/tools/pluto  
#  
# ntpd  
# date  
Sun Aug 16 12:28:23 UTC 2020  
#
```